

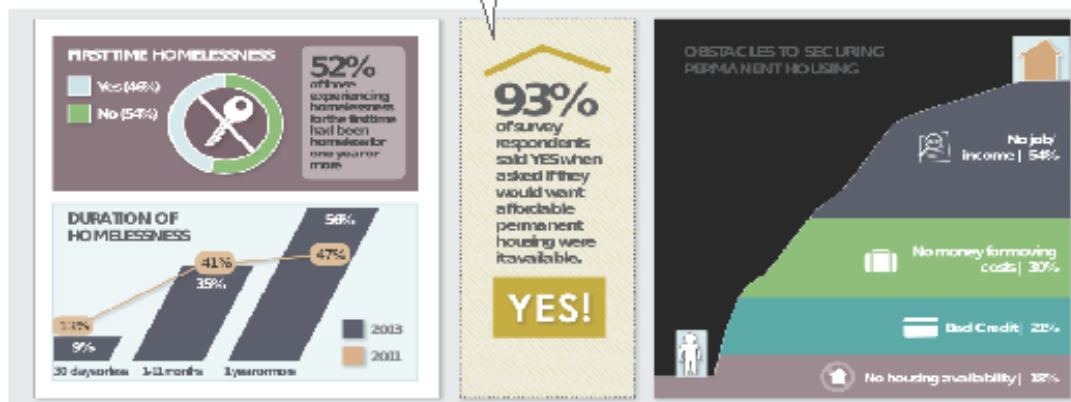
+ Encompass +

A Homeless Ministry of the
Santa Clara Valley Lutheran
Parish

The need . . .

FINDINGS OF THE SANTA CLARA COUNTY 2013 HOMELESS CENSUS & SURVEY

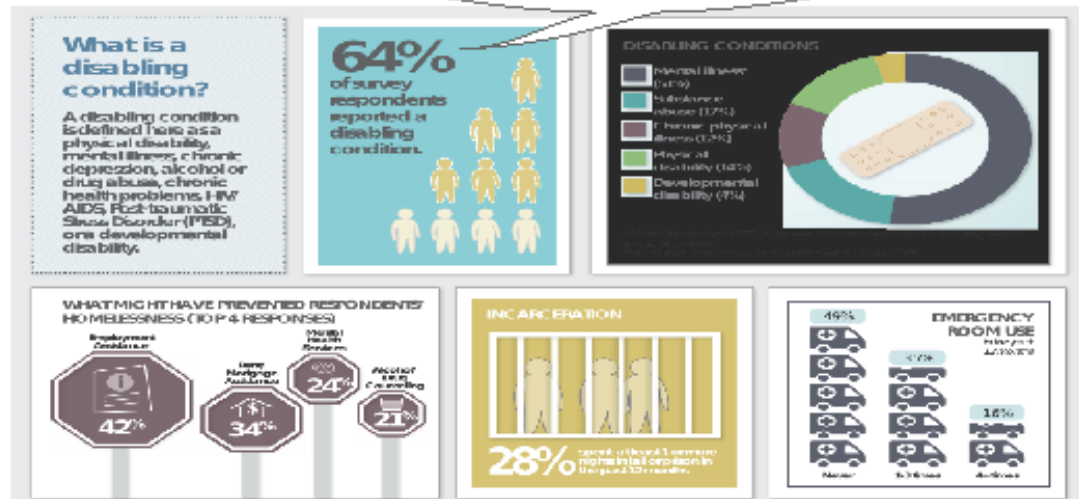
93% Of the homeless in our county would choose housing if they could afford it.



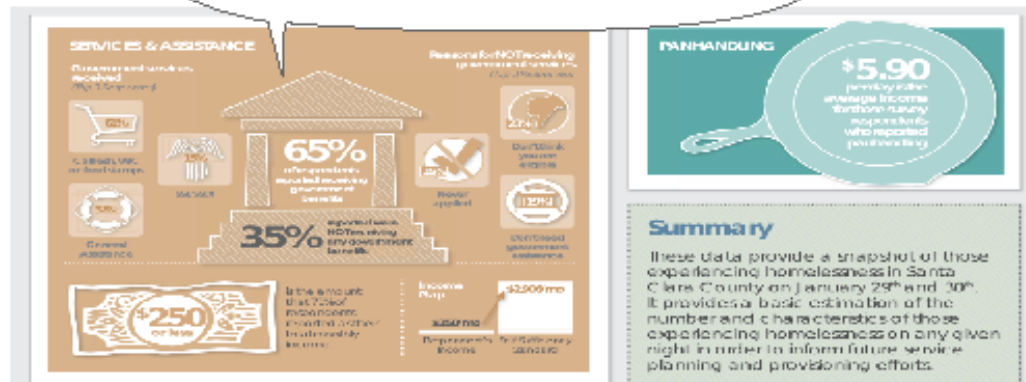
16% Of the homeless in our county have been in foster care.

FINDINGS OF THE SANTA CLARA COUNTY 2013 HOMELESS CENSUS & SURVEY

64% Of the homeless in our county reported a disabling condition.

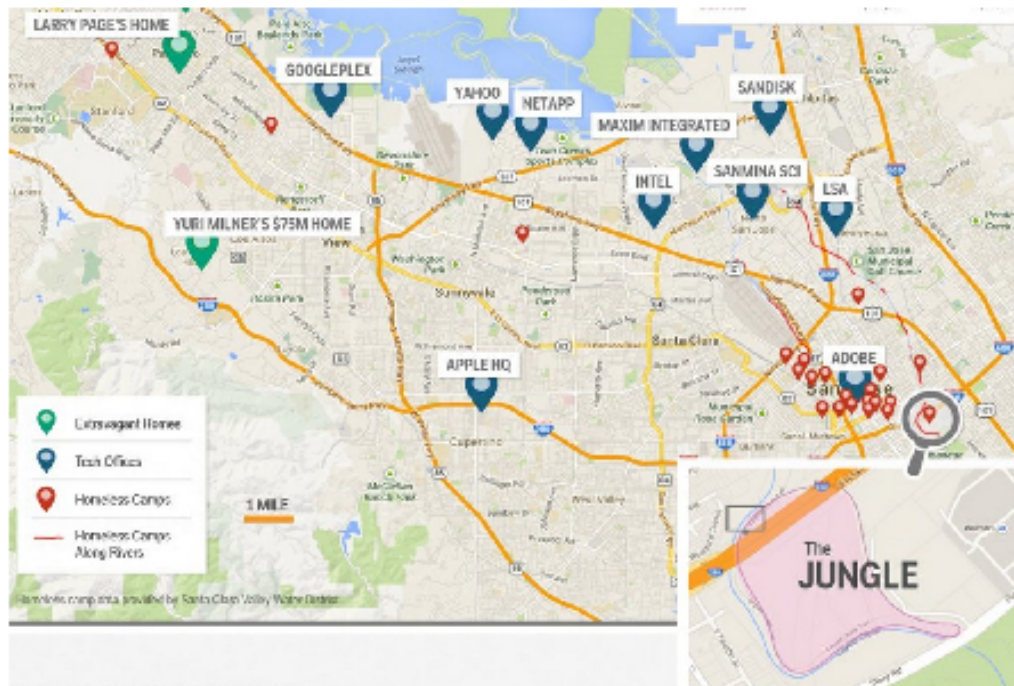


35% Of the homeless in our county reported not receiving any government benefits.



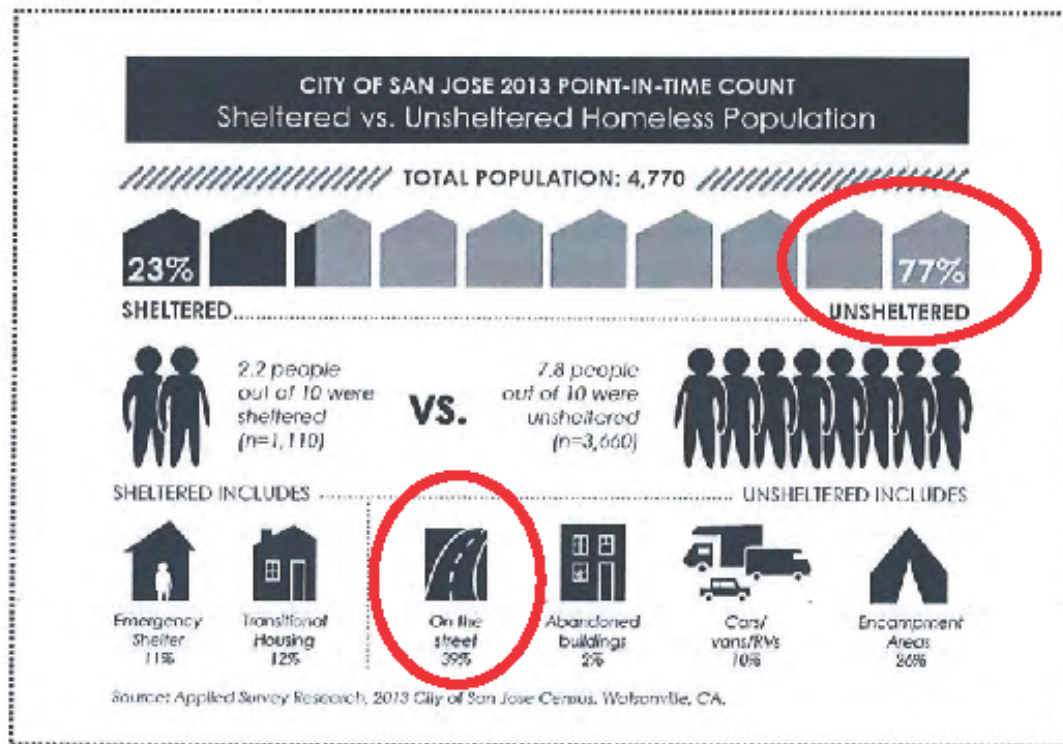
WELCOME TO THE JUNGLE

In a valley known for technology, innovation and wealth, it is ironic to find the largest homeless encampment in the United States; Over 200 people live in 75 acres of squalor along the banks of Coyote Creek, just across the street from Happy Hollow Zoo. Although Santa Clara County and the City of San Jose provide limited services, like all encampments in the county, the Jungle is under constant threat of being bulldozed and its occupants dispersed. **Encompass** will follow the people in need, wherever they find refuge.



ed dots
the
s of 21
omeless
n Santa
ounty.

WHERE THE HOMELESS SLEEP IN SAN JOSE

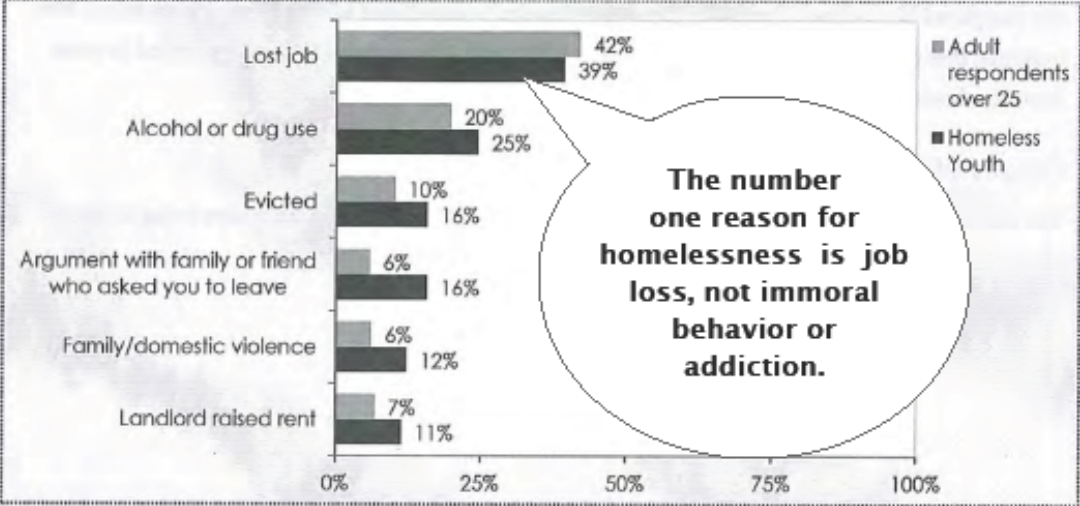


THE CAUSES OF HOMELESSNESS IN SAN JOSE



Photo from the Business Insider

PRIMARY CAUSES OF HOMELESSNESS (TOP 5 RESPONSES)



City of San Jose Homeless Encampment Response Report May, 2014



Photo from the Business Insider

FINDINGS:

- **14% of the homeless suffered from chronic physical illnesses**
- **12% suffered from physical disabilities**
- **3% suffered from developmental disabilities**

4.4% had a mental health condition, and 1.1% had a substance use disorder.

Homeless Youth. . .

The Mercury News cites (October 12, 2013 “Fears of another ‘Lost Generation’: Youth homeless numbers rising”) reported that Santa Clara County homeless young people (25 yrs. and younger) numbered 1,266. This is almost doubling of homeless youth in two years.



The number of homeless children living in America has gone up by 73 percent since 2006.



On May 23, 2014, the City of San Jose reported at what age people first experience homelessness:

Ages	%
4 – 13	14%
14 – 17	28%
18 – 21	46%
22 – 24	13%



THERE ARE SERVICES OFFERED TO THE HOMELESS

There are many government services provided to the homeless...

Housing for families with children

Domestic violence, family & children issues

Drop in day time service centers for you, disabled and seniors

Housing for single men and women

Rental and other community assistance programs

Medical, mental health and recovery programs

Veterans services

Legal referrals

Food and meals

Employment and vocational services

VTA services

Homeless outreach

. . .but they are there are still seemingly intractable problems for the homeless.

Inadequate funding

Lack of coordination between services

Insufficient affordable housing

And . . .

no church in their midst

Why don't they go to church?

While almost all of the homeless cling to God; for hope, help and comfort, they rarely feel comfortable in a church for a worship service.

Where everyone else smells nice.

The Ministry

ENCOMPASS:

A Homeless Ministry of the Santa Clara Valley Lutheran Parish

OBJECTIVES:

To minister to the spirit by:

- Building relationships
- Accompanying homeless to 12 step programs
- Visiting the homeless in jail
- Sharing God's word
- Praying with, and for, homeless folks
- Creating worship services in homeless encampments
- Providing Holy Communion as part of those worship services



To minister to the body by:

- Working with the Santa Clara County Collaborative on Affordable Housing and Homeless Issues
- Accompanying homeless who seek out medical or homeless services

To communicate with the Santa Clara Valley Lutheran Parish By:

- Blogging each week on key issues effecting those served, including prayer requests and pastoral reflections
- Providing temple talks upon invitation
- Engaging congregations in ministry to the homeless by hosting food, clothing, and shoe drives, meal preparation and other supportive measures



The Santa Clara County Collaborative on Affordable Housing and Homeless Issues

The mission of the Santa Clara County Collaborative on Housing and Homeless Issues is to increase the supply of affordable housing and reduce homelessness in the County. The Collaborative includes the County, cities, nonprofit organizations, the faith community, and concerned citizens in a coordinated effort to meet the housing and supportive services needs of unhoused and very low income residents of the County.

Encompass will work with the Santa Clara County Collaborative on Affordable Housing and Homeless Issues, representing the Santa Clara Valley Lutheran Parish in the Collaborative.

+ My Status +

I am a TEEM graduate, certified for Call. Sadly, the congregation that committed to my TEEM training and eventual Call, collapsed.

Currently, I volunteer 20 hrs. /wk working in local homeless camps; especially in the Jungle.

I also spend 15 hrs. /wk at Hope Lutheran teaching, preaching and assisting in youth ministry.

+ The Vision +

In discussions between leaders at Hope and the Parish, there is a vision and desire to Call me to serve in a full time Call split between:

Hope Lutheran as an Associate Pastor

Encompass Ministry as Founding Pastor

+ The Call+

We are praying that congregations of the Parish and other churches and individuals be willing to partner with Hope in this Call and providing the financial support for the Encompass Ministry portion of the Call.

If funding can be developed, then Hope Lutheran will vote to Call me to a 3-year Term Call with 50% of my time devoted to the Parish's Encompass Ministry.

+ The Structure +

Hope will issue the Call and then release 50% of my time back to the parish.

Hope will provide administration of finances , development of funding, accounting, insurance, etc.

The Encompass Supervisory Board will be made up of:

+ Pr. Anne Carlson, Pr. Ernest Brooks & Pr. John Sullivan as well as members from the supporting congregations.

+ Supervisory Board +

Supervisory Board duties will include:

Interpretation of the program to other entities (a group to speak on the ministry's behalf)

Audit of expenses

Set policy for outreach ministry

Audit programs

Job description

Setting up of the Board of Directors

+ Funding +

Through a special gift, Hope can support 50% of my salary and my entire housing allowance.

The remainder of my salary, along with 50% of Portico Retirement and benefits will need to come from the Parish and other sources to help develop the Encompass Ministry to the Santa Clara County Homeless.

+ The Cost +

The annual cost of this ministry involves compensation and program expenses.

The entry level for a first Call is 50K salary plus benefits: \$82,300.

Split between Hope and the SCVLP, the amount of \$41,150 each.

Estimated program expenses for the first year will be \$500 for Word and Sacrament supplies.

As additional needs arise, such as wheelchairs, clothing, food vouchers, etc., they will be shared with the congregations of the parish.

+ What are we asking for? +

Support from churches for the
Encompass Ministry to Santa Clara County Homeless
in the amount of:

\$41,150

We realize that today as an Assembly Voting Member
you may not be to speak on behalf of your church.

Please, take and return an ...

“INTENTION/PLEDGE FORM”

+ \$41,150 is a Big Number +

But already three churches have expressed their interest in supporting the Encompass Ministry and are considering significant gifts:

- + New Creation Lutheran Church, San Jose +
- + Hope Lutheran Church, Santa Clara +
- + St. Francis Lutheran Church, San Francisco +

Please, take and return an ...

“INTENTION/PLEDGE FORM”.